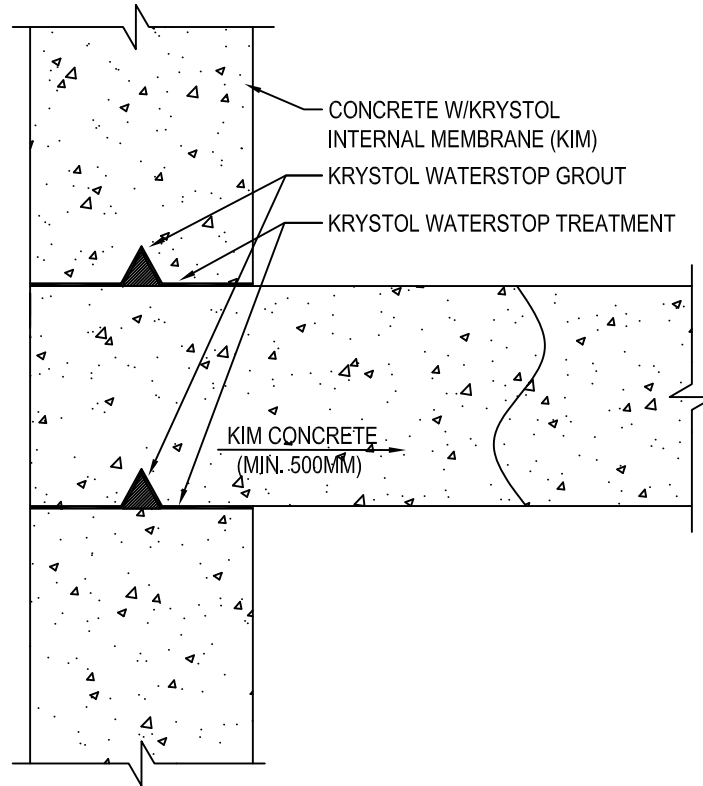




KRYTON INTERNATIONAL INC.
1645 EAST KENT AVE.
VANCOUVER, BC V5P 2S8
TOLL FREE: 1-800-267-8280
PHONE: (604) 324-8280
FAX: (604) 324-8899
www.kryton.com



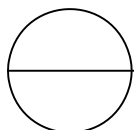
WALL TO ELEVATED SLAB
DOUBLE PROTECTION; INTERNAL GROUT METHOD

MANUFACTURER'S NOTES:

1. ADD KRYSTOL INTERNAL MEMBRANE (KIM) TO READY MIX CONCRETE OR SHOTCRETE AT A RATE OF 2% BY WEIGHT OF CEMENTITIOUS MATERIALS (INCLUDING FLY ASH AND OTHER SUPPLEMENTARY CEMENTING MATERIALS) TO A MAXIMUM DOSAGE OF 8 KG/M³ (13.5 LB. /CU. YD.)
2. PLACE KRYSTOL WATERSTOP GROUT IN A 50 MM (2 IN.) WIDE BY 30 MM (1.2 IN.) HIGH TRIANGULAR SHAPE AT A COVERAGE RATE OF 1.67 KG/M (1.12 LB. /FT.)
NOTE: ENSURE A MINIMUM OF 25 MM (1 IN.) BETWEEN GROUT AND REBAR, AND 50 MM (2 IN.) BETWEEN GROUT AND THE EDGE OF THE POUR.
3. COAT SURFACE AREA OF THE JOINT, AND CURED KRYSTOL WATERSTOP GROUT, WITH KRYSTOL WATERSTOP TREATMENT AT A SPREAD RATE OF 1 KG/M² (0.2 LB./SQ. FT.).

NOTES:

1. INSTALLATION TO BE COMPLETED IN ACCORDANCE WITH MANUFACTURER'S SPECIFICATIONS.
2. DO NOT SCALE DRAWING.
3. THIS DRAWING IS INTENDED FOR USE BY ARCHITECTS, ENGINEERS, CONTRACTORS, CONSULTANTS AND DESIGN PROFESSIONALS FOR PLANNING PURPOSES ONLY. THIS DRAWING MAY NOT BE USED FOR CONSTRUCTION.
4. ALL INFORMATION CONTAINED HEREIN WAS CURRENT AT THE TIME OF DEVELOPMENT BUT MUST BE REVIEWED AND APPROVED BY THE PRODUCT MANUFACTURER TO BE CONSIDERED ACCURATE.
5. CONTRACTOR'S NOTE: FOR PRODUCT AND COMPANY INFORMATION VISIT www.CADdetails.com/info AND ENTER REFERENCE NUMBER 5104-027



KRYSTOL WATERSTOP SYSTEM

WALL TO ELEVATED SLAB – DOUBLE PROTECTION – INT GROUT METHOD