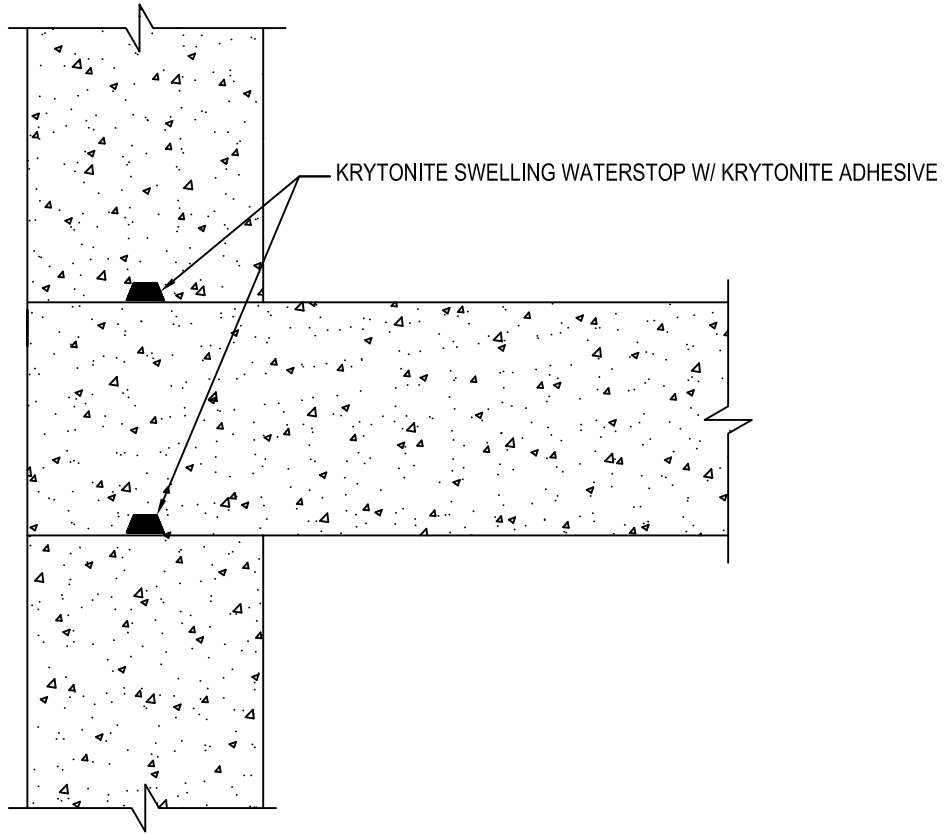




KRYTON INTERNATIONAL INC.  
1645 EAST KENT AVE.  
VANCOUVER, BC V5P 2S8  
TOLL FREE: 1-800-267-8280  
PHONE: (604) 324-8280  
FAX: (604) 324-8899  
www.kryton.com



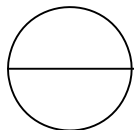
WALL TO ELEVATED SLAB  
SINGLE PROTECTION

MANUFACTURER'S NOTES:

1. INSTALL KRYTONITE SWELLING WATERSTOP IN CENTER OF WALL, USING KRYTONITE ADHESIVE AT A COVERAGE RATE OF 8-10 METERS (26-32 FT) PER CARTRIDGE.

NOTES:

1. INSTALLATION TO BE COMPLETED IN ACCORDANCE WITH MANUFACTURER'S SPECIFICATIONS.
2. DO NOT SCALE DRAWING.
3. THIS DRAWING IS INTENDED FOR USE BY ARCHITECTS, ENGINEERS, CONTRACTORS, CONSULTANTS AND DESIGN PROFESSIONALS FOR PLANNING PURPOSES ONLY. THIS DRAWING MAY NOT BE USED FOR CONSTRUCTION.
4. ALL INFORMATION CONTAINED HEREIN WAS CURRENT AT THE TIME OF DEVELOPMENT BUT MUST BE REVIEWED AND APPROVED BY THE PRODUCT MANUFACTURER TO BE CONSIDERED ACCURATE.
5. CONTRACTOR'S NOTE: FOR PRODUCT AND COMPANY INFORMATION VISIT [www.CADdetails.com/info](http://www.CADdetails.com/info) AND ENTER REFERENCE NUMBER 5104-025



**KRYSTOL WATERSTOP SYSTEM**

WALL TO ELEVATED SLAB – SINGLE PROTECTION