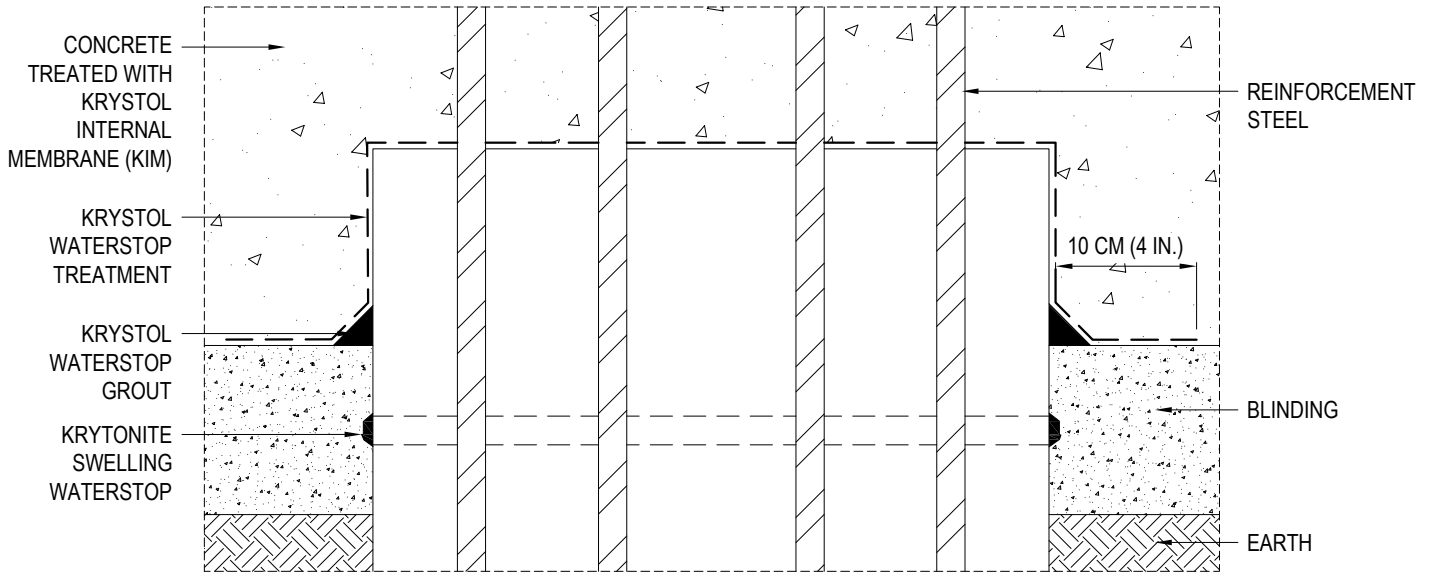




KRYTON INTERNATIONAL INC.
 1645 EAST KENT AVE.
 VANCOUVER, BC V5P 2S8
 TOLL FREE: 1-800-267-8280
 PHONE: (604) 324-8280
 FAX: (604) 324-8899
 www.kryton.com



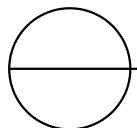
PILE CAP
 TRIPLE PROTECTION

MANUFACTURER'S NOTES:

1. INSTALL KRYTONITE SWELLING WATERSTOP IN CENTER OF SLAB, USING KRYTONITE ADHESIVE AT A COVERAGE RATE OF 8-10 METERS (26-32 FT) PER CARTRIDGE
2. PLACE CONCRETE AROUND PILLING.
3. PLACE KRYSTOL WATERSTOP GROUT IN A 50 MM (2 IN.) WIDE FILLET.
4. COAT SURFACE AREA OF THE CURED KRYSTOL WATERSTOP GROUT FILLET, SURROUNDING CONCRETE, AND THE TOP AND CIRCUMFERENTIAL AREA OF PILE HEAD WITH KRYSTOL WATERSTOP TREATMENT AT A SPREAD RATE OF 1 KG/M² (0.2 LB./FT²).
5. PLACE CONCRETE TREATED WITH KRYSTOL INTERNAL MEMBRANE (KIM)

NOTES:

1. INSTALLATION TO BE COMPLETED IN ACCORDANCE WITH MANUFACTURER'S SPECIFICATIONS.
2. DO NOT SCALE DRAWING.
3. THIS DRAWING IS INTENDED FOR USE BY ARCHITECTS, ENGINEERS, CONTRACTORS, CONSULTANTS AND DESIGN PROFESSIONALS FOR PLANNING PURPOSES ONLY. THIS DRAWING MAY NOT BE USED FOR CONSTRUCTION.
4. ALL INFORMATION CONTAINED HEREIN WAS CURRENT AT THE TIME OF DEVELOPMENT BUT MUST BE REVIEWED AND APPROVED BY THE PRODUCT MANUFACTURER TO BE CONSIDERED ACCURATE.
5. CONTRACTOR'S NOTE: FOR PRODUCT AND COMPANY INFORMATION VISIT www.CADdetails.com/info AND ENTER REFERENCE NUMBER 5104-051



PENETRATIONS

PILE CAP - TRIPLE PROTECTION