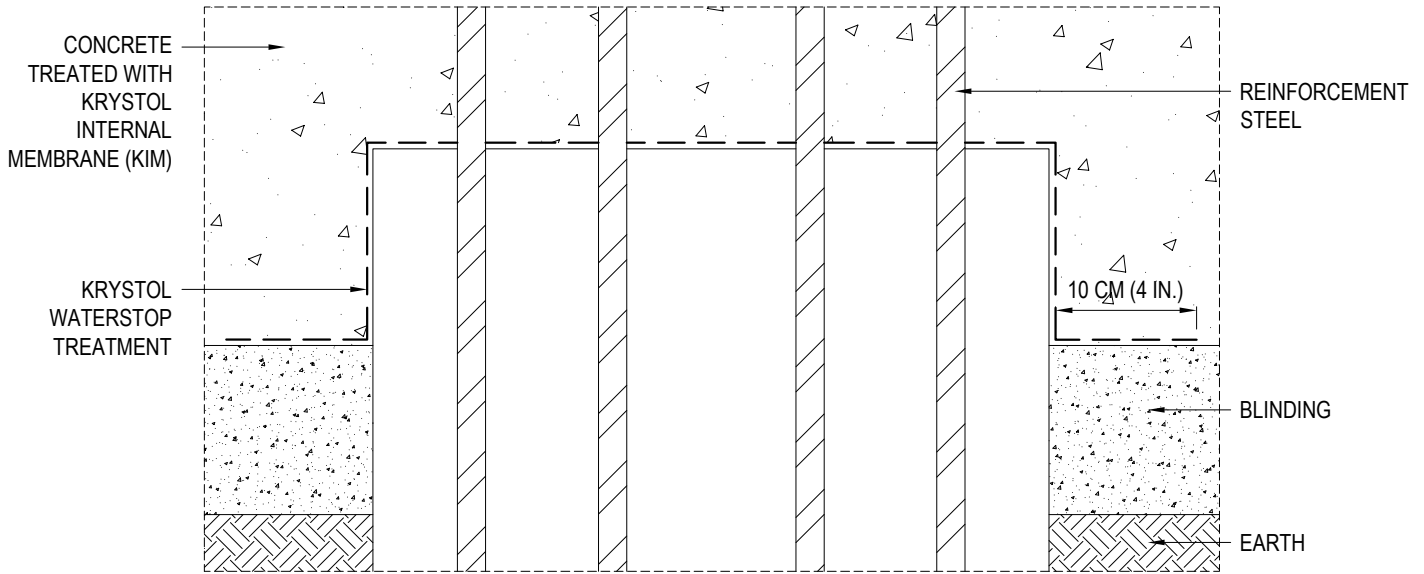




KRYTON INTERNATIONAL INC.  
 1645 EAST KENT AVE.  
 VANCOUVER, BC V5P 2S8  
 TOLL FREE: 1-800-267-8280  
 PHONE: (604) 324-8280  
 FAX: (604) 324-8899  
 www.kryton.com



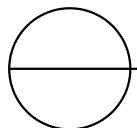
PILE CAP  
 SINGLE PROTECTION

MANUFACTURER'S NOTES:

1. COAT THE TOP AND CIRCUMFERENTIAL AREA OF PILE HEAD, AND SURROUNDING CONCRETE WITH KRYSTOL WATERSTOP TREATMENT AT A SPREAD RATE OF 1 KG/M<sup>2</sup> (0.2 LB./FT<sup>2</sup>).
2. PLACE CONCRETE TREATED WITH KRYSTOL INTERNAL MEMBRANE (KIM)

NOTES:

1. INSTALLATION TO BE COMPLETED IN ACCORDANCE WITH MANUFACTURER'S SPECIFICATIONS.
2. DO NOT SCALE DRAWING.
3. THIS DRAWING IS INTENDED FOR USE BY ARCHITECTS, ENGINEERS, CONTRACTORS, CONSULTANTS AND DESIGN PROFESSIONALS FOR PLANNING PURPOSES ONLY. THIS DRAWING MAY NOT BE USED FOR CONSTRUCTION.
4. ALL INFORMATION CONTAINED HEREIN WAS CURRENT AT THE TIME OF DEVELOPMENT BUT MUST BE REVIEWED AND APPROVED BY THE PRODUCT MANUFACTURER TO BE CONSIDERED ACCURATE.
5. CONTRACTOR'S NOTE: FOR PRODUCT AND COMPANY INFORMATION VISIT [www.CADdetails.com/info](http://www.CADdetails.com/info) AND ENTER REFERENCE NUMBER 5104-064



PENETRATIONS

PILE CAP - SINGLE PROTECTION