

KRYTONITE™ SWELLING WATERSTOP



The Most Effective Waterproofing
Protection for Construction Joints
and Penetrations

SIMPLE & EASY INSTALLATION



Krytonite Swelling Waterstop is easy to install and is ideal for a wide variety of construction joints and penetrations.



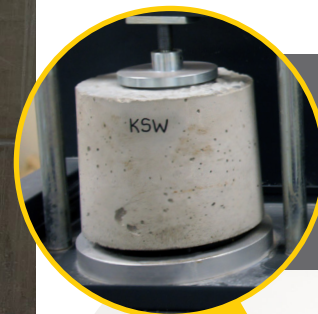
- Krytonite™ Swelling Waterstop comes in standard and rain-protected.
- Krytonite™ Adhesive reliably bonds Krytonite Swelling Waterstop to horizontal and vertical concrete surfaces, even when the concrete is damp.

OUTPERFORMS THE COMPETITION KRYTONITE SWELLING WATERSTOP



- Outperforms its competitors
- Stops water, even against extreme hydrostatic pressure
- Offers excellent cohesive properties, and will not deteriorate over time
- Provides controlled swelling, which ensures proper concrete strength development
- Enhances visibility during inspections with a distinct color
- Improves concrete consolidation and reduces voids with a unique trapezoid shape

PROVEN WATERSTOPPING PERFORMANCE



265
FT OF HEAD

PROVEN WATER
PRESSURE RESISTANCE



Krytonite Swelling Waterstop proved to withstand hydrostatic pressure up to 265 ft (0.8 MPa) of head when tested using DIN 1048-5. Its swelling pressure seals construction joints and stops water.

BENTONITE WATERSTOP

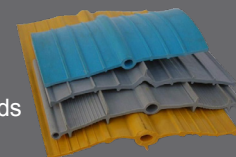
- Expands only 1-2x with clay material
- Swells uncontrollably, and disintegrates over time
- Fails to stop water under extreme hydrostatic pressure



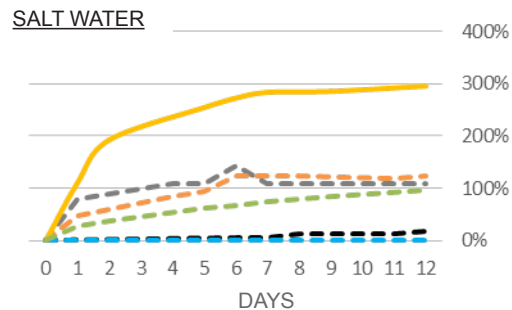
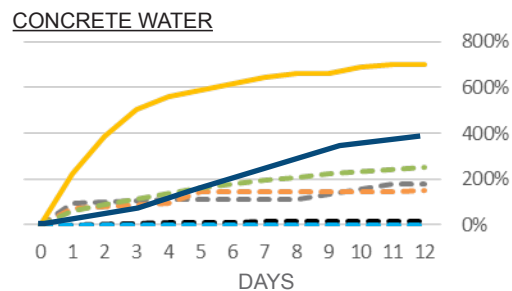
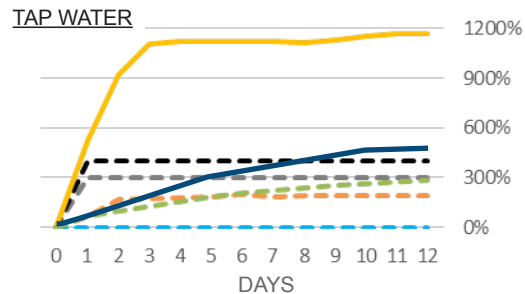
VS

PVC WATERSTOP

- Does not swell
- Bends during concrete pours, creating voids
- Is difficult to install



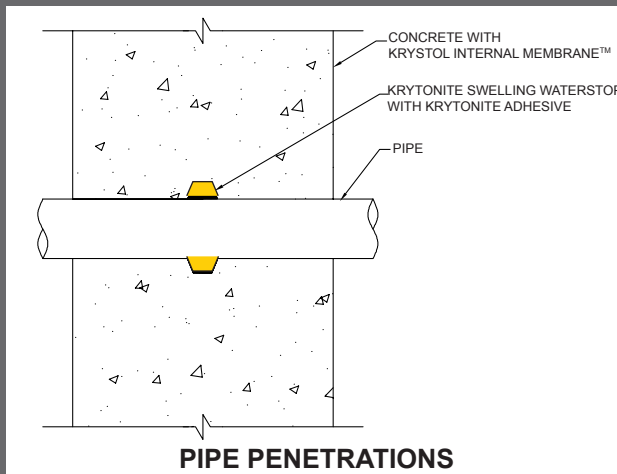
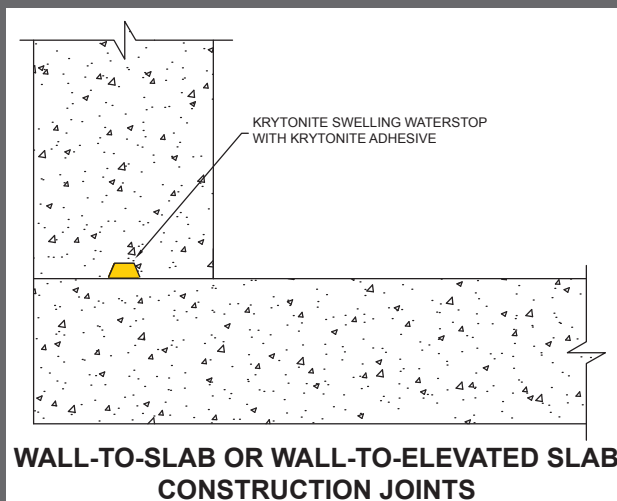
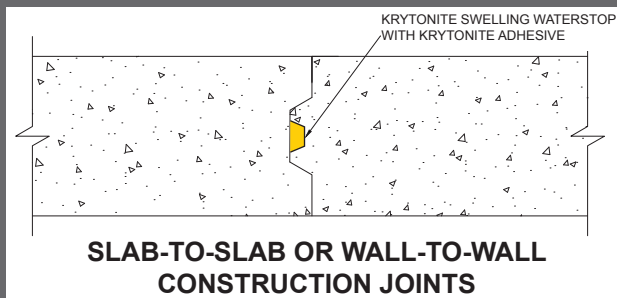
SWELLING PERFORMANCE



- Krytonite Swelling Waterstop
- Krytonite RP (Rain Protected)
- Competitor 1 - Non-Bentonite
- Competitor 2 - Non-Bentonite
- Competitor 3 - Bentonite
- Competitor 4 - Bentonite
- Competitor 5 - PVC

**Krytonite Swelling Waterstop
outperforms the competition.**

WHERE KRYTONITE IS USED:



Full CAD drawing instructions and applications available at:
www.kryton.com/technical-info/cad-drawing-details/



Kryton headquarters are in Vancouver, Canada. Our solutions are sold by over 50 distributors worldwide. To find the Kryton distributor nearest you, visit our website:
www.kryton.com



SMART CONCRETE®

Kryton International Inc.

1645 East Kent Avenue North
Vancouver, BC, Canada V5P 2S8
Tel: +1.604.324.8280
Toll-free (in Canada/USA):
1.800.267.8280
Email: info@kryton.com
www.kryton.com