

LYRIC THEATRE COMPLEX

Hong Kong, China (2023)

PRODUCT:

Krytol Internal Membrane™ KIM®

PROJECT

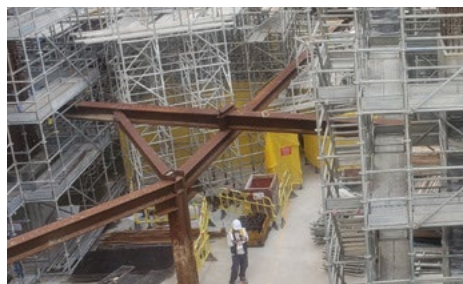
Building is underway on a world-class facility for dance performances and arts organizations; the first of its kind in Hong Kong. The new Lyric Theatre Complex will be a creativity powerhouse capable of hosting performers from Asia and around the world with its 1,450-seat venue, 600-seat Medium Theatre, 200-seat Studio Theatre and Resident Company Centre - a collaboration hub for Hong Kong's dance companies to explore, develop and collaborate on their craft.

Scheduled for completion in 2023, the Lyric Theatre Complex is being built on the waterfront at the western end of the West Kowloon Cultural District (WKCD) and will be an inviting and vibrant creative space for performers and public alike. UNStudio (Netherlands) and AD+RG (Hong Kong) designed extensive glass windows to capitalize on the sweeping views of the Victoria Harbour. Along with the large theatre, halls and rehearsal studios, the complex will include offices, restaurants, a roof garden and an internal walkway that takes visitors from the waterfront to Artist Square and waterfront promenade.

THE CHALLENGE

Waterproofing requirements

Because the Lyric Theatre Complex was being built on reclaimed land consisting of sand infill on deep soft marine clay deposits, the tender stipulated the basement required waterproofing sufficient to resist 13.8 bar water head pressure (200 psi) on the negative side. Additionally, any waterproofing material used could not contain corrosion promoting ingredients.



THE SOLUTION

Why Kryton's product was chosen

The team successfully approached Senior Management of West Kowloon Cultural District Authority and persuaded them to consider KIM® as the crystalline waterproof concrete admixture, supplying them with international job references and recommendation letters. Krytol Internal Membrane™ (KIM®) easily satisfied and exceeded performance requirements dictated by the tender.

How the challenge was solved

1. Support from Kryton Headquarters: Kryton provided full and effective technical support through testing and documentation in order to fulfill the project requirements.
2. Excellent relations between Chevalier Building Supplies and Engineering Ltd (Hong Kong Master Distributor) was key to getting support from the main contractor (Gammon Construction) and successfully persuading the consultant (UNSTUDIO / AD+RG), and the client (West Kowloon Cultural District Authority) to consider KIM® as a superior option.
3. Organizational skill in research and testing allowed Chevalier to submit the required comprehensive local testing report (BS EN 934 and BS 5075 respectively) by a highly regarded local laboratory within a short period of time.
4. Good teamwork and team spirit were essential. The team spirit between Kryton Headquarters, the Territory Manager, and Chevalier was unparalleled to meet the challenge of winning this project.
5. The product Krytol Internal Membrane™ (KIM®) superior waterproofing ability was well known, but everyone involved were also delighted to witness cracks self-sealing in KIM® treated concrete.

Conclusion

West Kowloon Cultural District Authority can rest assured that the concrete treated with KIM® additive will remain dry and durable, protecting the unique Lyric Theatre Complex and its cultural performances well into the future.