

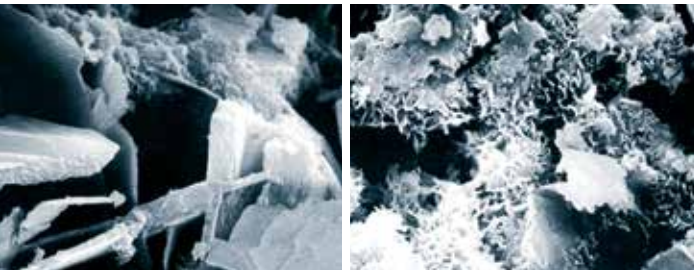
# KRYSTOL MORTAR ADMIXTURE

Krytol Mortar Admixture (KMA) transforms ordinary mortar into a water-proof, crack resistant barrier that withstands even the harshest elements.

Benefiting from Kryton's Krytol technology, the Krytol Mortar Admixture (KMA) reduces the permeability of cementitious mortar to improve durability, lower maintenance and reduce costs associated with repair.

## Features & Benefits

- Protects from water penetration
- Increases durability
- Extends the products life cycle
- Lowers maintenance and repair costs
- No sealers needed: simplifies installation, reduces labour and speeds up construction schedules
- Does not affect appearance



Regular mortar (Left) VS Krytolized mortar (Right)

## A WORLD OF APPLICATIONS



Use Krytol Mortar Admixture to provide permanent protection for:

- Masonry Mortar
- Rendering
- Stucco
- Cement/Mortar Plastering
- Cast Concrete Masonry Units:
  - Bricks
  - Blocks
- Other Concrete Products:
  - Highway dividers
  - Roofing tiles
  - Patio slabs



Available in 15 kg (33 lb.) or 3 kg (6.6 lb.) pails

## PRODUCT APPLICATION

Before you begin please refer to [www.kryton.com](http://www.kryton.com) for:

- Application Instruction 6.11 - Protecting Masonry Mortar
- Application Instruction 6.21 - Protecting Rendering & Plastering Mortar

**1**

**USE EXISTING MIX DESIGN**

Dose at 2% by weight of Cement.  
Cement 23Kg (50 lb) + KMA 0.45 Kg (1lb)

**2**

**ADD WATER AND MIX**

Typically needs less water

**3**

**INSTALL MORTAR AS USUAL**

Masonry      Rendering

<24hrs

**4**

**WATER CURE**

Masonry      Rendering

2-5 DAYS

## WHY KRYTON:

THE MOST EFFECTIVE CONCRETE WATERPROOFING SYSTEM IN THE WORLD

- Proven Krytol technology, that ensures waterproofing for the life of the structure.
- Well-defined, step-by-step installation process that ensures success.
- 24/7 field-level support that provides answers and guidance wherever and whenever you need them.
- Independently accredited proof of performance. Kryton works with industry, academic, and governmental bodies around the world to develop certification standards and testing methodologies.
- Assurance from the leading warranty in the industry.

# KRYSTOL MORTAR ADMIXTURE IN THE FIELD

## ROYAL MILLS RIVERPOINT APARTMENTS



Royal Mills Riverpoint Apartments, West Warwick, Rhode Island, USA

## AMERICAN DREAM DEVELOPMENT



American Dream Development, Changsha, China



# KRYSTOL MORTAR ADMIXTURE™

PROTECTION ADMIXTURE FOR  
STUCCO, MASONRY MORTARS,  
AND CONCRETE MASONRY UNITS

Offices in Canada, USA, UK, Singapore, China, India, and Dubai. Plus, with over 50 distributors worldwide, there is a Kryton distributor near you.

Find yours today: [www.kryton.com](http://www.kryton.com)



BE SURE. BE KRYTON.



BE SURE. BE KRYTON.

### Kryton International Inc.

1645 East Kent Avenue  
Vancouver, BC Canada V5P 2S8  
Tel: 1.604.324.8280  
Fax: 1.604.324.8899  
Toll Free: 1.800.267.8280  
Email: [info@kryton.com](mailto:info@kryton.com)