

Private Home

London, England (2012)

BACKGROUND

When the owners of a multi-million pound luxury home in London's exclusive Belgravia, one of the wealthiest districts in the world and close to Buckingham Palace, wanted to renovate and add a basement they went to well-known contractors Abbey Pynford for a solution. There were many issues with the project including:

- 1) Any work completed on London's hereditary estates must conform to exacting standards and are subjected to rigorous scrutiny and approvals.
- 2) The site, in an established neighborhood did not leave any room to remove the current home and build the new basement beneath it.
- 3) The project would need waterproofing that would last the life of the concrete.

SOLUTION

Abbey Pynford opted for a "top-down" basement construction solution with underpinning. Due to the unique construction process, difficult site and building restrictions waterproofing was a challenge.

In accordance with BS8102 the "code of practice for the protection of below ground structures from water in the ground" Abbey Pynford chose Kryton's Krystol Concrete Waterproofing System as their Type 2 waterproofing. Kryton's flexible and easy-to-use products allowed Abbey Pynford to use their existing design without alterations.

Kryton's concrete waterproofing admixture – Krystol Internal Membrane (KIM) was used to waterproof the basement floor, lower ground floor and walls. Kryton's Krystol Waterstop System was used to waterproof the construction joints to wall underpinning walls, both horizontal and vertical.

DEVELOPER:

Grangewood

ENGINEER:

Trigram Partnership

CONTRACTOR:

Abbey Pynford

READY-MIX:

Tarmac

DISTRIBUTOR:

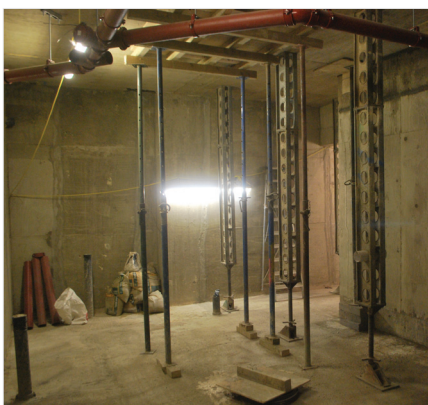
ICCT Limited

PRODUCTS:

Learn more at kryton.com
 Krystol Internal Membrane™ (KIM®)
 Krystol® Waterstop System



Basement underpinning work.



Basement under construction.



Typical home in Belgravia.