

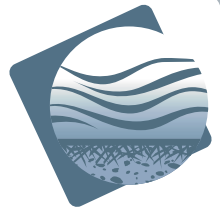


At the Lab. In the Field.  
By Your Side.

# Wellcome Supermarket

Hong Kong (S.A.R), China

April 2009



Page 1 of 2

CONCRETE  
WATERPROOFING

QUESTIONS: 1-800-267-8280 or [www.kryton.com](http://www.kryton.com)

PROJECT CASE STUDY

## BACKGROUND

Founded in 1945, Wellcome is the regions' longest-established supermarket chains and one of the largest in the region. Wellcome is owned by Jardine Matheson Holdings via its Dairy Farm subsidiary. It also operates supermarkets in the Republic of China under the same name.

Failure of a conventional membrane system on the negative side walls at the basement level led to severe leakage problems throughout the area. Knowing that traditional repair products only work best after application but will soon deteriorate over time, the team sought a different approach that would provide a long-term solution.

A trial test demonstrated the ability of Kryton's Crack Repair System to stop water in its tracks.

## SOLUTION

The full Crack Repair System was used to patch up numerous meters of cracks and damp spots on the walls. The team followed the application steps by starting with the Krystol Plug™ to immediately stop the flowing water. This was followed by the application of the T1 dry pack and Bari-cote™. To finish, Krystol T1® slurry was applied to cover all the walls and columns to prevent future leaks and damp spots from re-occurring around the repaired crack areas.

After only 14 days, the basement resumed to its required dry state, enabling the client to finish the basement level, decorate, stock the shelves with products, and open for business ahead of schedule.

The basement walls remained dry even after heavy rainfalls - a measure of a successful repair.



Before: Severe water leakage from the basement walls



Application of Krystol Plug, as per step #2 of the Crack Repair System



To finish, the repaired wall is coated with Krystol T1



After: The basement walls are all dry, even after heavy rains

### The Kryton Group of Companies.

1645 East Kent Avenue, Vancouver, BC Canada V5P 2S8 Tel.: 1-604-324-8280 Toll Free: 1-800-267-8280 Fax: 1-604-324-8899 E-mail: [info@kryton.com](mailto:info@kryton.com) Web: [www.kryton.com](http://www.kryton.com)

## KRYTON CRACK REPAIR SYSTEM

The Krystol system uses advanced integral crystalline waterproofing technology to transform porous concrete into a permanent, water-resistant barrier and provide a guaranteed defence against water damage and steel reinforcement corrosion. Millions of needle-like crystals begin to grow and spread throughout the concrete, self-sealing cracks and permanently blocking the movement of water in all directions. These crystals then remain dormant until another crack forms, at which time they will react with incoming water to self-seal the crack and maintaining a watertight seal.

Unlike other systems, Krystol® protects from any direction, even against high water pressure. Because Krystol can be applied to either side of the concrete, there are no limits when it comes to repairing or waterproofing hard or impossible to reach areas. Put Krystol to work wherever the cracks are—without expensive, time consuming perimeter digging.

### 5 Easy Steps to a leak-free and permanent crack repair:

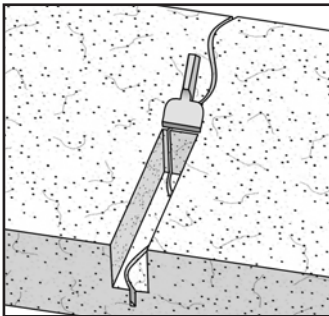


Figure 1  
Chisel and prepare the crack

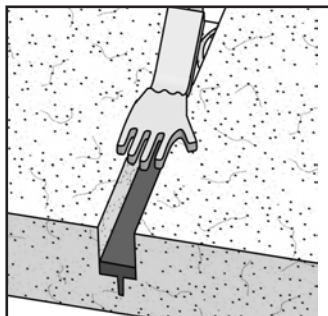


Figure 2  
Install Krystol Plug™

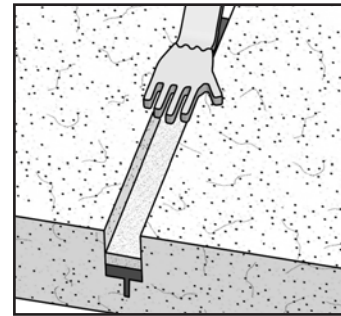


Figure 3  
Install Krystol T1®

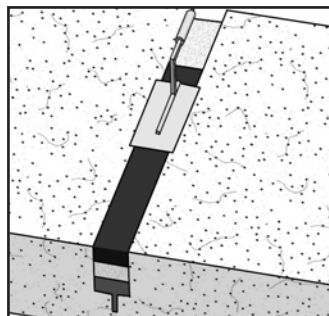


Figure 4  
Install Krystol Bari-cote™

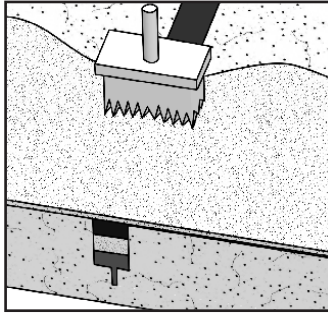


Figure 5  
Install Krystol T1 & T2® slurry coats

## PROJECT LOCATION

Wellcome Supermarket - Basement Level of SimCity, 47-51 Shantung Street, Mongkok, Hong Kong

## OWNER

The Dairy Farm, a subsidiary of Jardine Matheson Holdings

## APPLICATOR & DISTRIBUTOR

GrowTech Limited

### The Kryton Group of Companies.