

# KRYSTOL INTERNAL MEMBRANE™ (KIM®)

THE MOST TRUSTED  
WATERPROOFING ADMIXTURE



SMART CONCRETE®

TELUS Gardens, British Columbia, Canada  
Waterproofed with KIM.

## KRYSTOL INTERNAL MEMBRANE™ (KIM®)

Krytol Internal Membrane (KIM) is a hydrophilic crystalline admixture used to create permanently waterproof concrete.

KIM lowers the permeability of concrete and is used in place of surface applied waterproofing membranes. By stopping the transmission of water through concrete, KIM adds durability and longevity to concrete by protecting it against chemical attack and corrosion of reinforcing steel.



- **Waterproofs concrete** – Lowers water penetration by reducing permeability of the concrete by 50-90%, even under extreme hydrostatic pressure.
- **Self-seals cracks** – Activates in the presence of moisture to seal micro-cracks that develop over the life-span of the structure.
- **Environmentally-friendly** - Safe for potable water (certified to NSF/ANSI 61) and non-toxic.
- **Protects reinforcing steel** – Prevents the penetration of waterborne contaminants and chloride-laden water that causes the corrosion of reinforcing steel.
- **Reduces shrinkage and cracking** – During the plastic and curing stages, increasing quality and longevity of concrete.
- **Resists freeze-thaw** – Mitigates the effect of expansion and contraction of freezing and thawing within concrete.

## HOW IT WORKS

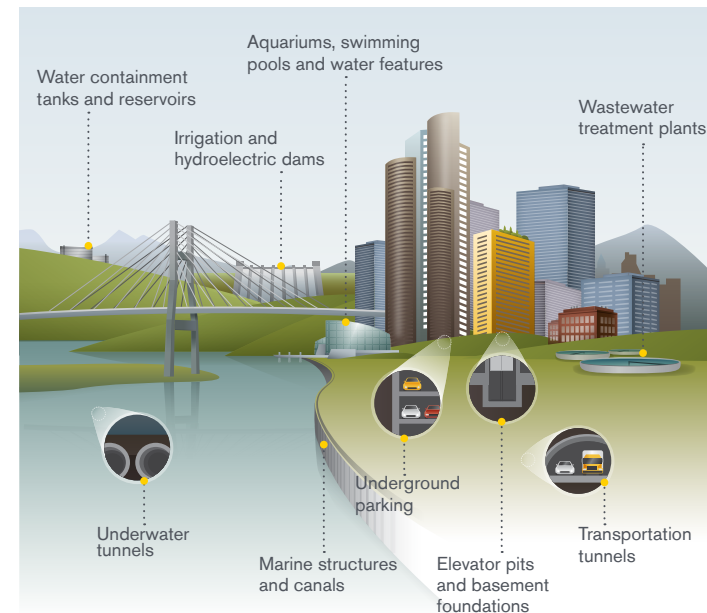
KIM contains Krytol® technology. When added to concrete, Krytol chemically reacts with water and un-hydrated cement particles to form insoluble needle-shaped crystals that fill capillary pores and micro-cracks in the concrete and block the pathways for water and waterborne contaminants. Any moisture introduced over the lifespan of the concrete will initiate crystallization, ensuring permanent waterproofing protection.



Kryton has  
over 250 project  
profiles available  
at [www.kryton.com](http://www.kryton.com)

## A WORLD OF APPLICATIONS

KIM is recommended for all concrete that will be subject to water pressure and can be used in cast-in-place, pre-cast and shotcrete applications.



## KIM IN THE FIELD

VANCOUVER, BC, CANADA - 700 WEST 8<sup>TH</sup>



KIM was added to the shotcrete mix used to waterproof the concrete perimeter walls.

*"Using Kryton's KIM in the shotcrete as the concrete waterproofer helped us complete the project on time with a fast paced schedule. Due to our success on 700 West 8th, we have been using Kryton's Krytol Waterproofing System on a variety of other projects in different parts of the lower mainland of BC"*

- Bryan Tucker, VP of Construction for ICON Pacific.

## KIM VS TRADITIONAL WATERPROOFING:

- Replaces the need for surface applied waterproofing membranes
- Cannot be punctured
- Shortens construction schedules
- Lowers maintenance and repair costs
- Improves reliability and quality control
- Allows for a larger building footprint

## KIM VS COMPETITORS:

- Krystol technology is **chemically different** from its competitors
- Only KIM is the **best performing** crystalline admixture
  - Highest level of **permeability reduction**
  - **Most dependable self-sealing** performance
  - Best shrinkage and restrained **shrinkage cracking reduction**
  - Only product proven to **protect against corrosion**
- Only Kryton offers a **complete waterproofing system** that covers every construction detail
- Kryton is the inventor of the crystalline waterproofing admixture and we have **the most experience**

### ATLANTA, USA - 55 ALLEN PLAZA



The below-grade walls were built from the top down, using single-sided forming against the dirt. The developer used KIM to waterproof because the shoring wall did not leave room for installing conventional membranes.

*"Kryton is a great team to work with and we are extremely impressed with their waterproofing products. Their products do what they promise to do. Even though there's water behind the walls, it's not leaking through the concrete because of Kryton's crystalline technology."*

- Rick Anderson, President of ABE.

## WHY KRYTON:

## THE MOST EFFECTIVE CONCRETE WATERPROOFING AND DURABILITY ENHANCING SOLUTIONS IN THE WORLD



Proven Krystol® technology that ensures waterproofing for the life of the structure.



Well-defined, step-by-step installation process that ensures success.



Comprehensive support and consultation resources available to provide answers and guidance.



Assurance from the leading warranty in the industry.



Independently accredited proof of performance. Kryton works with industry, academic, and governmental bodies around the world to develop certification standards and testing methodologies.



Kryton headquarters are in Canada with 7 regional offices in China, India, Mexico, Singapore, UAE, USA and UK. Our solutions are sold by over 50 distributors worldwide. To find the Kryton distributor nearest you, visit our website: [www.kryton.com](http://www.kryton.com)



SMART CONCRETE®

### Kryton International Inc.

1645 East Kent Avenue  
Vancouver, BC Canada V5P 2S8  
Tel: 1.604.324.8280  
Fax: 1.604.324.8899  
Toll Free: 1.800.267.8280  
Email: [info@kryton.com](mailto:info@kryton.com)

