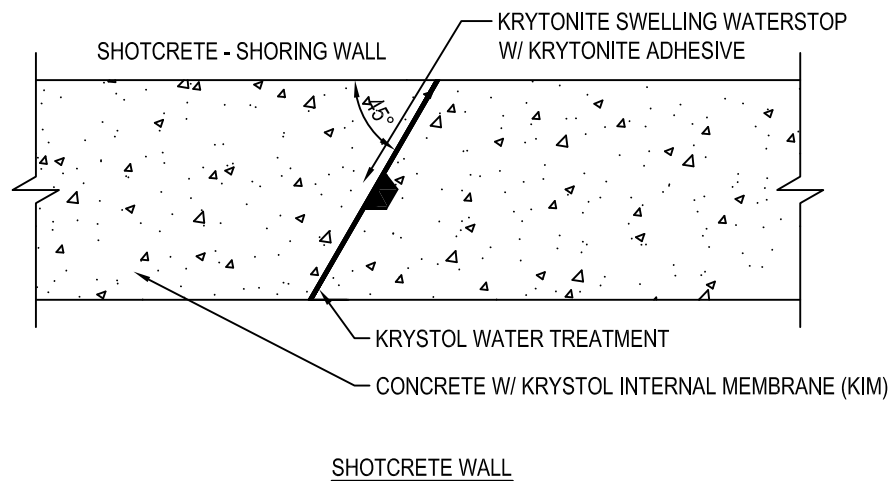
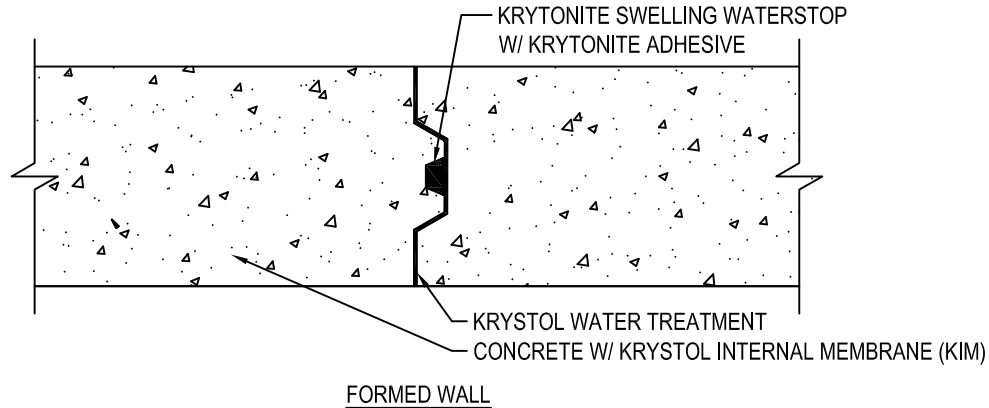




KRYTON INTERNATIONAL INC.
 1645 EAST KENT AVE.
 VANCOUVER, BC V5P 2S8
 TOLL FREE: 1-800-267-8280
 PHONE: (604) 324-8280
 FAX: (604) 324-8899
 www.kryton.com



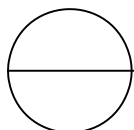
WALL TO WALL (VERTICAL) CONSTRUCTION JOINTS
DOUBLE PROTECTION; INTERNAL SWELLING METHOD

MANUFACTURER'S NOTES:

1. ADD KRYSTOL INTERNAL MEMBRANE (KIM) TO READY MIX CONCRETE A RATE OF 2% BY WEIGHT OF CEMENTITIOUS MATERIALS (INCLUDING FLY ASH AND OTHER SUPPLEMENTARY CEMENTING MATERIALS) TO A MAXIMUM DOSAGE OF 8 KG/M³ (13.5 LB./CU. YD.)
2. COAT SURFACE AREA OF THE JOINT WITH KRYSTOL WATERSTOP TREATMENT AT A SPREAD RATE OF 1 KG/M² (0.2 LB./SQ. FT.).
3. INSTALL KRYTONITE SWELLING WATERSTOP IN CENTER OF SLAB, USING KRYTONITE ADHESIVE AT A COVERAGE RATE OF 8-10 METERS (26-32 FT) PER CARTRIDGE

NOTES:

1. INSTALLATION TO BE COMPLETED IN ACCORDANCE WITH MANUFACTURER'S SPECIFICATIONS.
2. DO NOT SCALE DRAWING.
3. THIS DRAWING IS INTENDED FOR USE BY ARCHITECTS, ENGINEERS, CONTRACTORS, CONSULTANTS AND DESIGN PROFESSIONALS FOR PLANNING PURPOSES ONLY. THIS DRAWING MAY NOT BE USED FOR CONSTRUCTION.
4. ALL INFORMATION CONTAINED HEREIN WAS CURRENT AT THE TIME OF DEVELOPMENT BUT MUST BE REVIEWED AND APPROVED BY THE PRODUCT MANUFACTURER TO BE CONSIDERED ACCURATE.
5. CONTRACTOR'S NOTE: FOR PRODUCT AND COMPANY INFORMATION VISIT www.CADdetails.com/info AND ENTER REFERENCE NUMBER 5104-019



KRYSTOL WATERSTOP SYSTEM (KWS)

WALL TO WALL – DOUBLE PROTECTION – INT SWELLING METHOD