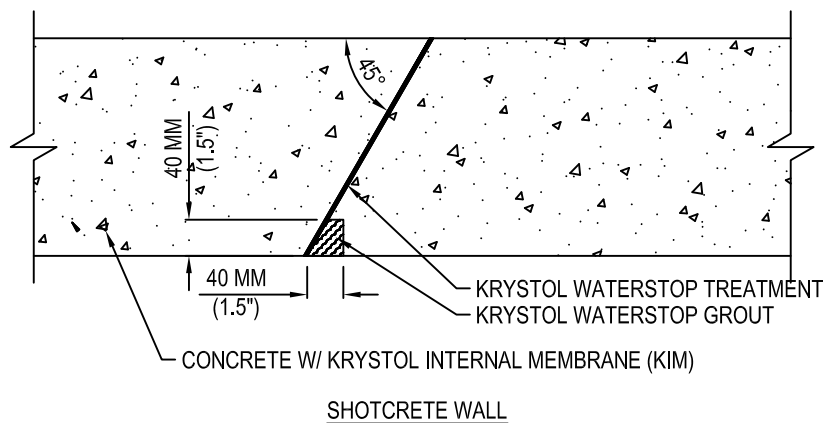
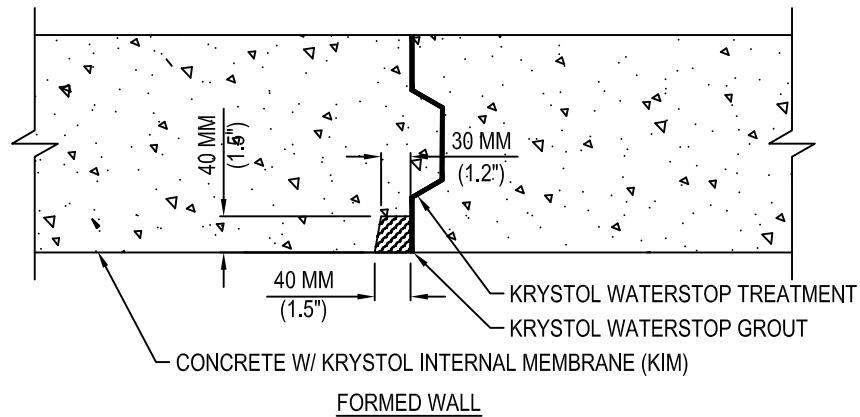




KRYTON INTERNATIONAL INC.
 1645 EAST KENT AVE.
 VANCOUVER, BC V5P 2S8
 TOLL FREE: 1-800-267-8280
 PHONE: (604) 324-8280
 FAX: (604) 324-8899
 www.kryton.com



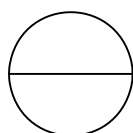
WALL TO WALL (VERTICAL) CONSTRUCTION JOINTS
DOUBLE PROTECTION; EXTERNAL GROUT METHOD

MANUFACTURER'S NOTES:

1. ADD KRYSSTOL INTERNAL MEMBRANE (KIM) TO READY MIX CONCRETE A RATE OF 2% BY WEIGHT OF CEMENTITIOUS MATERIALS (INCLUDING FLY ASH AND OTHER SUPPLEMENTARY CEMENTING MATERIALS) TO A MAXIMUM DOSAGE OF 8 KG/M³ (13.5 LB./CU. YD.)
2. COAT SURFACE AREA OF THE JOINT WITH KRYSSTOL WATERSTOP TREATMENT AT A SPREAD RATE OF 1 KG/M² (0.2 LB./SQ. FT.).
3. CREATE A 40 MM X 40 MM, TAPERING TO 30 MM, KEYWAY AT THE INTERSECTION WHERE THE TWO CONCRETE SECTIONS MEET WHILE THE CONCRETE IS IN A MOLDABLE PLASTIC STATE.
4. TIGHTLY PACK PREFORMED KEYWAY FLUSH TO THE SURFACE WITH KRYSSTOL WATERSTOP GROUT AT A RATE OF 3.33 KG/M (2.23 LB./FT.).

NOTES:

1. INSTALLATION TO BE COMPLETED IN ACCORDANCE WITH MANUFACTURER'S SPECIFICATIONS.
2. DO NOT SCALE DRAWING.
3. THIS DRAWING IS INTENDED FOR USE BY ARCHITECTS, ENGINEERS, CONTRACTORS, CONSULTANTS AND DESIGN PROFESSIONALS FOR PLANNING PURPOSES ONLY. THIS DRAWING MAY NOT BE USED FOR CONSTRUCTION.
4. ALL INFORMATION CONTAINED HEREIN WAS CURRENT AT THE TIME OF DEVELOPMENT BUT MUST BE REVIEWED AND APPROVED BY THE PRODUCT MANUFACTURER TO BE CONSIDERED ACCURATE.
5. CONTRACTOR'S NOTE: FOR PRODUCT AND COMPANY INFORMATION VISIT www.CADdetails.com/info AND ENTER REFERENCE NUMBER 5104-018



KRYSSTOL WATERSTOP SYSTEM (KWS)

WALL TO WALL – DOUBLE PROTECTION – EXT GROUT METHOD