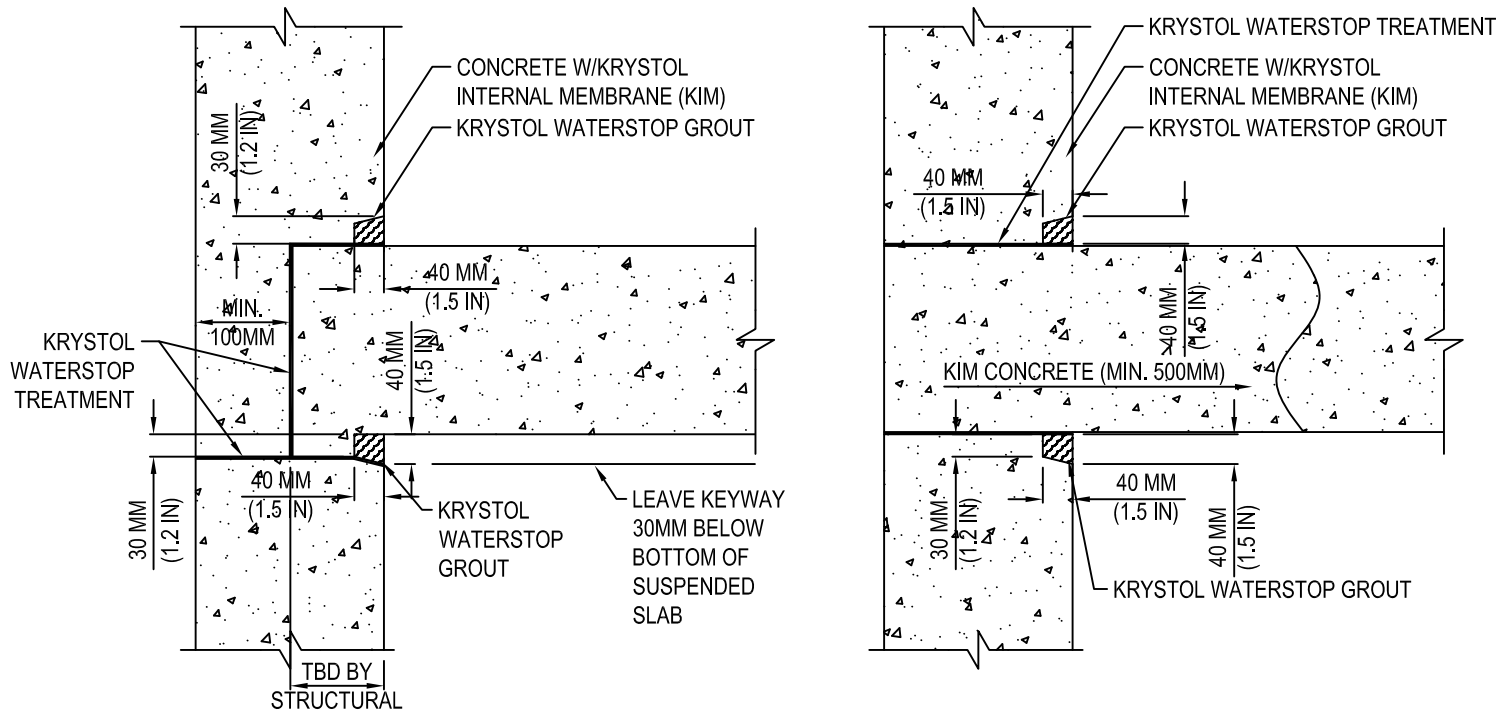




KRYTON INTERNATIONAL INC.  
 1645 EAST KENT AVE.  
 VANCOUVER, BC V5P 2S8  
 TOLL FREE: 1-800-267-8280  
 PHONE: (604) 324-8280  
 FAX: (604) 324-8899  
 www.kryton.com



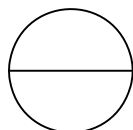
WALL TO ELEVATED SLAB CONSTRUCTION JOINTS  
 DOUBLE PROTECTION; EXTERNAL GROUT METHOD

**MANUFACTURER'S NOTES:**

1. ADD KRYSTOL INTERNAL MEMBRANE (KIM) TO READY MIX CONCRETE OR SHOTCRETE AT A RATE OF 2% BY WEIGHT OF CEMENTITIOUS MATERIALS (INCLUDING FLY ASH AND OTHER SUPPLEMENTARY CEMENTING MATERIALS) TO A MAXIMUM DOSAGE OF 8 KG/M<sup>3</sup> (13.5 LB./CU. YD.)
2. COAT SURFACE AREA OF THE JOINT WITH KRYSTOL WATERSTOP TREATMENT AT A SPREAD RATE OF 1 KG/M<sup>2</sup> (0.2 LB./SQ. FT.).
3. CREATE A 40 MM X 40 MM (1.5 IN. X 1.5 IN.), TAPERING TO 30 MM (1.2 IN.), KEYWAY AT THE INTERSECTION WHERE THE TWO CONCRETE SECTIONS MEET, THROUGH FORMING, OR WHILE THE CONCRETE IS IN A MOLDABLE PLASTIC STATE.
4. TIGHTLY PACK PREFORMED KEYWAY FLUSH TO THE SURFACE WITH KRYSTOL WATERSTOP GROUT AT A RATE OF 3.33 KG/M (2.23 LB./FT.).

**NOTES:**

1. INSTALLATION TO BE COMPLETED IN ACCORDANCE WITH MANUFACTURER'S SPECIFICATIONS.
2. DO NOT SCALE DRAWING.
3. THIS DRAWING IS INTENDED FOR USE BY ARCHITECTS, ENGINEERS, CONTRACTORS, CONSULTANTS AND DESIGN PROFESSIONALS FOR PLANNING PURPOSES ONLY. THIS DRAWING MAY NOT BE USED FOR CONSTRUCTION.
4. ALL INFORMATION CONTAINED HEREIN WAS CURRENT AT THE TIME OF DEVELOPMENT BUT MUST BE REVIEWED AND APPROVED BY THE PRODUCT MANUFACTURER TO BE CONSIDERED ACCURATE.
5. CONTRACTOR'S NOTE: FOR PRODUCT AND COMPANY INFORMATION VISIT [www.CADdetails.com/info](http://www.CADdetails.com/info) AND ENTER REFERENCE NUMBER 5104-026



**KRYSTOL WATERSTOP SYSTEM**

WALL TO ELEVATED SLAB – DOUBLE PROTECTION – EXT GROUT METHOD