

Krytol® Waterstop System

Waterproofing Horizontal Construction Joints – Internal Grout Method.

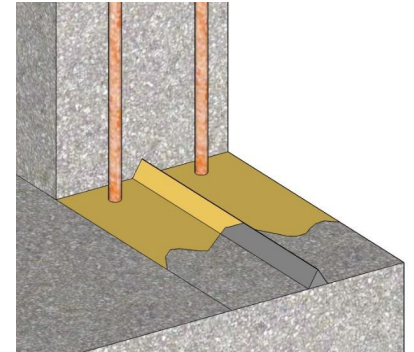
DESCRIPTION:

Follow these instructions to waterproof horizontal concrete construction joints (such as wall-on-slab joints) with the Internal Grout Method, using Krytol Waterstop Grout and Krytol Waterstop Treatment.

Drawings, CAD Details and Specification Language: visit www.kryton.com/technical-info/ or contact your authorized Kryton representative.

LIMITATIONS

Not for use at expansion joints. The Krytol Waterstop System is effective for rigid structures only and may not reliably seal joints that experience variable loading or repeated movement. Not compatible with stay-in-place metal mesh formwork. Air and surface temperatures at the time of application must be at least 4°C (40°F).

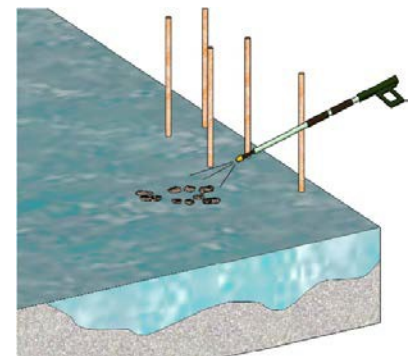


SAFETY PERCAUTIONS

Read and follow the Safety Data Sheets (SDS) for these products (at www.Kryton.com). For professional use only. Krytol Waterstop Treatment and Krytol Waterstop Grout become highly caustic when mixed with water or perspiration. Avoid contact with skin or eyes. Avoid breathing dust. Wear long sleeves, safety goggles and impervious gloves.

STEP 1: SURFACE PREPARATION

1. Joints must be level and sound. Use a chipping hammer to level areas that are very rough or uneven. Chip out rock pockets using a sharp, flat chisel (ensure edges are square and not feathered) and repair with Krytol Waterstop Grout (see Step 7). **TIP:** Forming joints so they are sound and level while the concrete is fresh will eliminate the need to do this after it has hardened.
2. Clean joints by high-pressure water blasting, or use a wire brush and rinse until very clean. Remove laitance, oils, curing compounds or anything that may interfere with bonding. Use a de-greaser if needed to remove form release agents. A final ICRI Concrete Surface Profile (CSP) of 1-3 is adequate.



STEP 2: INSTALL KRYSTOL WATERSTOP GROUT

1. Bring the concrete to a saturated surface-dry (SSD) condition. This means the concrete is saturated with water, but no free water remains at the surface. Thoroughly soak the keyway with water; then remove excess water with a sponge just before installing Krytol Waterstop Grout. **TIP:** Water blasting is effective at cleaning and saturating the joint in one-step.

APPLICATION INSTRUCTION

Construction Joints & Details

4.11

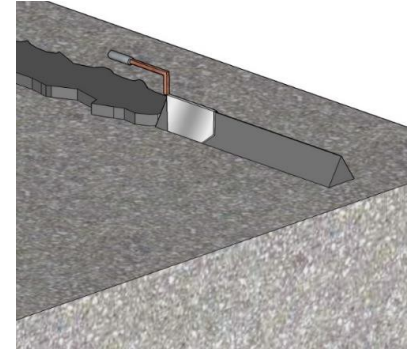


2. Mix Krystol Waterstop Grout as follows: Slowly add powder to water while mixing (approximately 4.5 parts powder to 1 part clean water by volume) and mix thoroughly. The mixture may appear dry at first, but will become workable when fully mixed. The grout should be sag free and stiff enough to hold its shape, but still easy to handle and trowel. Mix only as much as you can place in 30 minutes.

NOTE: After mixing, the grout may stiffen in the pail. Do not add more water. Remixing will make the grout easy to work with again.

3. Place a line of Krystol Waterstop Grout down the center of the joint. Leave at least 25 mm (1 in.) between the grout and rebar, and at least 50 mm (2 in.) between the grout and the edge of the concrete pour. Mold into a triangle using the Kryton Triangle Trowel (or similar tool). Use a sawing motion to compact and shape the grout. The triangle must be 50 mm (2 in.) wide by at least 30 mm (1.25 in.) high.

IMPORTANT: Protect the joint from rain and rapid drying. Use plastic sheeting to protect from rain, sun and wind until the grout hardens (approx. 1 hour at 20°C). Once hardened, protect from freezing for 24 hours, and keep damp for 48 hours or until Treatment is applied. Do not use curing compounds.



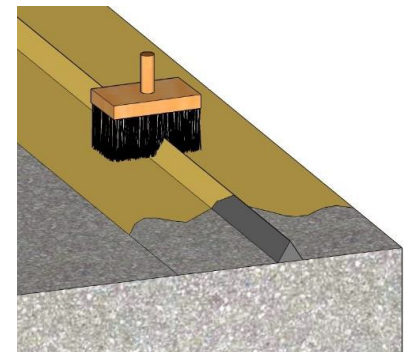
STEP 3: APPLY KRYSTOL WATERSTOP TREATMENT

NOTE: Apply Treatment any time after the grout has hardened. Bring the concrete to SSD condition first (see Step 2).

1. Mix Krystol Waterstop Treatment to a thick but flowing paste (approximately 3 parts powder to 1 part clean water by volume). The paste will seem very stiff at first, but will become thinner when fully mixed. Mix only as much as you can apply within 30 minutes.
2. Use a concrete brush to coat the entire joint. Ensure the Treatment fills all surface voids and is at about 1 mm (40 mil) thick. Do not allow Treatment to build up on reinforcement.

NOTE: After mixing, the material may thicken in the pail. Do not add more water. Remixing will make the material easy to spread again.

IMPORTANT: Protect the joint from rain and rapid drying. Use plastic sheeting to protect from rain, sun and wind until the Treatment has hardened (approx. 2.5 hours at 20°C). Once hardened, protect from freezing for 24 hours, and keep damp for 48 hours. Do not use curing compounds.



STEP 4: PLACE AND CONSOLIDATE CONCRETE

Place concrete over the joint as normal. To achieve a waterproof joint:

1. Remove debris and water from the joint before placing concrete.
2. Do not let form release oil contaminate the joint.
3. Remove form spreaders (if present) as the concrete is placed.
4. Place and vibrate concrete following ACI 309R - Guide for Consolidation of Concrete.
5. Place shotcrete using an ACI certified nozzle crew following ACI 506R – Guide to Shotcrete.
6. Cure following ACI 308.1 (Specification for Curing Concrete) taking measures to prevent rapid drying.

APPLICATION INSTRUCTION

Construction Joints & Details

4.11



COVERAGE

<u>Material</u>	<u>Coverage</u>										
Krytol Waterstop Treatment (Applied at 1.0 kg/m ² (0.2 lb. /sq.ft.))	One 25 kg (55 lb. pail) will cover approximately 25 m ² (270 square feet). Approximate lineal coverage: <table border="1"><thead><tr><th><u>Joint Width:</u></th><th><u>Coverage per Pail</u></th></tr></thead><tbody><tr><td>150 mm (6 inches)</td><td>164 m (540 feet)</td></tr><tr><td>200 mm (8 inches)</td><td>125 m (405 feet)</td></tr><tr><td>250 mm (10 inches)</td><td>100 m (325 feet)</td></tr><tr><td>300 mm (12 inches)</td><td>82 m (270 feet)</td></tr></tbody></table>	<u>Joint Width:</u>	<u>Coverage per Pail</u>	150 mm (6 inches)	164 m (540 feet)	200 mm (8 inches)	125 m (405 feet)	250 mm (10 inches)	100 m (325 feet)	300 mm (12 inches)	82 m (270 feet)
<u>Joint Width:</u>	<u>Coverage per Pail</u>										
150 mm (6 inches)	164 m (540 feet)										
200 mm (8 inches)	125 m (405 feet)										
250 mm (10 inches)	100 m (325 feet)										
300 mm (12 inches)	82 m (270 feet)										
Krytol Waterstop Grout	One 25 kg (55 lb. pail) will yield approximately 13 liters (0.46 cubic feet) of grout. As a grout triangle, the lineal coverage is approximately 16 m (53 feet) per pail.										

TOOLS & MATERIALS

- Clean water supply
- Mixing bucket, drill and mortar paddle
- Natural bristle concrete brush
- Margin trowel
- Water spray and towel/sponge
- High pressure water blaster
- Measuring cups
- Kryton Triangular Trowel or similar tool
- Chipping hammer or scabbler

AU Patent No. 2005247966 UK

Patent No. GB2429989 US Pat.

Pend. No. 11/569,435 CA Pat.

Pend. No. 2,565,467