

# KRYSTOL INTERNAL MEMBRANE™ (KIM®)

THE MOST TRUSTED  
WATERPROOFING ADMIXTURE



SMART CONCRETE®

## KIM

KIM is a hydrophilic crystalline admixture used to create permanently waterproof concrete.

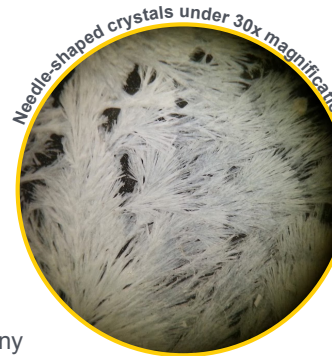


KIM lowers the permeability of concrete and is used in place of surface-applied waterproofing membranes. By stopping the transmission of water through concrete, KIM adds durability and longevity to concrete as it protects the concrete from chemical attack and its reinforcing steel from corrosion.

- **Waterproofs concrete** – Lowers water penetration by reducing permeability of the concrete by 50-90%, even under extreme hydrostatic pressure
- **Self-seals cracks** – Activates in the presence of moisture to seal micro-cracks that develop over the life span of the structure
- **Is environmentally friendly** – Remains safe for potable water (certified to NSF/ANSI 61) and non-toxic
- **Protects reinforcing steel** – Prevents the penetration of waterborne contaminants and chloride-laden water that cause reinforcing steel to corrode
- **Reduces shrinkage and cracking** – Increases quality and longevity of concrete during the plastic and curing stages
- **Resists freeze-thaw damage** – Mitigates the effect of expansion and contraction of freezing and thawing within concrete

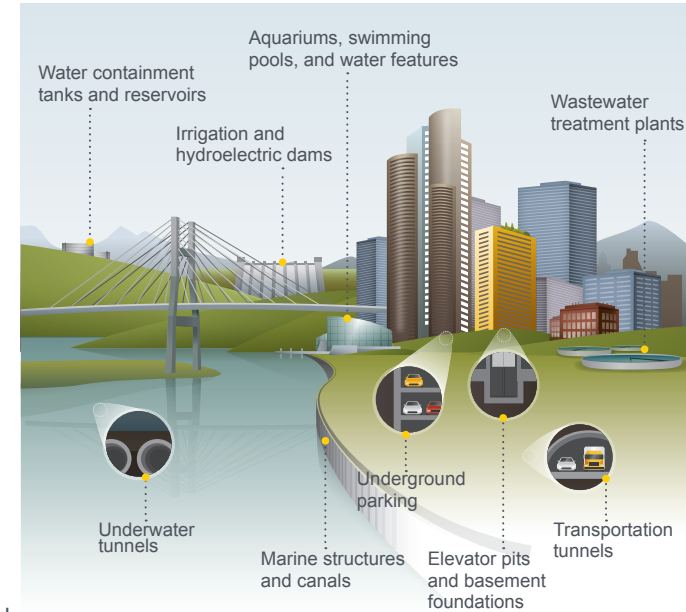
## HOW IT WORKS

KIM contains Krystol® technology. When added to concrete, Krystol chemically reacts with water and unhydrated cement particles to form insoluble needle-shaped crystals that fill capillary pores and micro-cracks in the concrete, which blocks the pathways for water and waterborne contaminants. Any moisture introduced over the life span of the concrete will initiate crystallization, ensuring permanent waterproofing protection.



## A WORLD OF APPLICATIONS

KIM is recommended for all concrete that will be subject to water pressure and can be used in cast-in-place, precast, and shotcrete applications.



## KIM IN THE FIELD

VANCOUVER, BC, CANADA  
700 WEST 8TH



KIM was added to the shotcrete mix used to waterproof the concrete perimeter walls.

*"Using Kryton's KIM in the shotcrete as the concrete waterproofer helped us complete the project on time with a fast-paced schedule. Due to our success on 700 West 8th, we have been using Kryton's Krystol Waterproofing System on a variety of other projects in different parts of the Lower Mainland of BC."*

- Bryan Tucker, VP of Construction for ICON Pacific

Kryton has  
over 250 project  
profiles available at  
[www.kryton.com](http://www.kryton.com)

# KIM VS TRADITIONAL WATERPROOFING:

- Replaces the need for surface-applied waterproofing membranes
- Cannot be punctured
- Shortens construction schedules
- Lowers maintenance and repair costs
- Improves reliability and quality control
- Allows for a larger building footprint

# KIM VS COMPETITORS:

- Krystol technology is chemically different from its competitors
- Only KIM is the best-performing crystalline admixture with the:
  - Highest level of permeability reduction
  - Most dependable self-sealing performance
  - Best shrinkage and restrained shrinkage cracking reduction
  - Proven ability to protect against corrosion
- Only Kryton offers a complete waterproofing system that covers every construction detail
- Kryton is the inventor of the crystalline waterproofing admixture, and we have the most experience

ATLANTA, GA, USA  
55 ALLEN PLAZA



The below grade walls were built from the top down, using single-sided forming against the dirt. The developer used KIM to waterproof because the shoring wall did not leave room for installing conventional membranes.

*"Kryton is a great team to work with, and we are extremely impressed with their waterproofing products. Their products do what they promise to do. Even though there's water behind the walls, it's not leaking through the concrete because of Kryton's crystalline technology."*

- Rick Anderson, President of ABE Enterprises

## WHY KRYTON:

## THE MOST EFFECTIVE CONCRETE WATERPROOFING AND DURABILITY-ENHANCING SOLUTIONS IN THE WORLD



Proven Krystol technology that ensures waterproofing for the life of the structure



Well-defined, step-by-step installation process that ensures success



Comprehensive support and consultation resources available to provide answers and guidance



Assurance from the leading warranty in the industry



Independently accredited proof of performance as Kryton works with industry, academic, and governmental bodies around the world to develop certification standards and testing methodologies



Kryton headquarters are in Vancouver, Canada. Our solutions are sold by over 50 distributors worldwide. To find the Kryton distributor nearest you, visit our website: [www.kryton.com](http://www.kryton.com)



SMART CONCRETE®

**Kryton International Inc.**

1645 East Kent Avenue  
Vancouver, BC, Canada V5P 2S8  
Tel: 1.604.324.8280  
Toll-free (in Canada/USA):  
1.800.267.8280  
Email: [info@kryton.com](mailto:info@kryton.com)

